



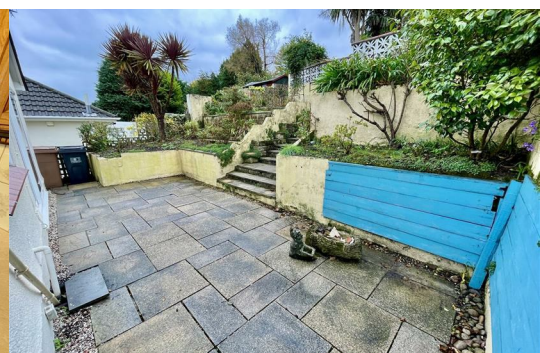
## 49 Weston Mill Hill

Weston Mill, Plymouth, PL5 2AR

£230,000



A well proportioned detached bungalow being sold vacant with no onward chain. The benefit of gas fired central heating with a Worcester Bosch boiler installed in 2012 & uPVC double-glazing. The property comprises a reception hall/study area, lounge/dining room, fitted kitchen, shower room, 3 bedrooms, the 3rd bedroom currently laid out as a dining room. There is a single lock up garage in a block.



WESTON MILL HILL, WESTON MILL, PLYMOUTH, PL5 2AR

SUMMARY

The property was built in the 1960s & has been in the same family ownership since the late 1980s. Maintained over the years & would benefit from a program of upgrading & improvement to be brought up to a modern uniform standard, offering good potential.

LOCATION

Found in Weston Mill with a variety of local services & amenities in the area, including schools, shops & bus services nearby.

ACCOMMODATION

uPVC double-glazed door into;

HALL 11'8 x 10'4 maximum (3.56m x 3.15m maximum)

'L-shaped'. Spacious & can be used as a study area. Cupboard housing the mains gas & electric meters. Access hatch to an insulated loft with lighting & partially boarded.

LOUNGE 14' x 13'6 maximum (4.27m x 4.11m maximum)

Good-sized lounge/dining room with windows to the side & rear with sliding patio door overlooking the rear garden. Fireplace with electric heater.

KITCHEN 13'6 x 7'7 maximum (4.11m x 2.31m maximum)

A good-sized fitted kitchen. A range of cupboard & drawer storage with integrated appliances which include a Bendix 4 ring hob, Neff dual oven/grill, 1.5 bowl sink unit & Worcester Greenstar gas fired boiler servicing the gas central heating & domestic hot water.

BEDROOM ONE 11'8 x 11'2 (3.56m x 3.40m)

BEDROOM TWO 11'8 x 8'5 (3.56m x 2.57m)

BEDROOM THREE/DINING ROOM 10'4 x 7'11 (3.15m x 2.41m)

Presently laid out as a dining room.

SHOWER ROOM

Comprises an upgraded shower including Mira Jump electrically heated shower, wash hand basin & wc.

EXTERNALLY

Mature gardens to the front. Laid to lawn with borders containing a variety of mature bushes & shrubs. Side access pathway on one side & access on the other side as well. To the rear a generous-sized largely southerly-facing rear garden with wide paved patio next to the property. Steps lead up to a further mature garden area with a variety of specimen bushes, shrubs & plants. The garden having a semi-tropical feel and enjoying a relatively sheltered position from the prevailing winds. About 100 meters away is a single garage in a close by block (blue door 3rd from right).

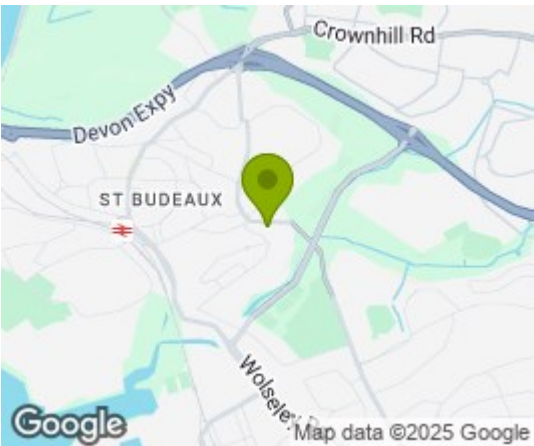
COUNCIL TAX

Plymouth City Council  
Council Tax Band: D

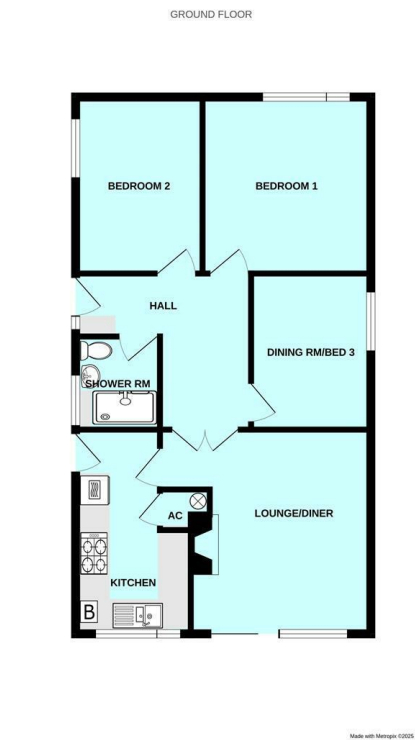
SERVICES PLYMOUTH

The property is connected to all the mains services: gas, electricity, water and drainage.

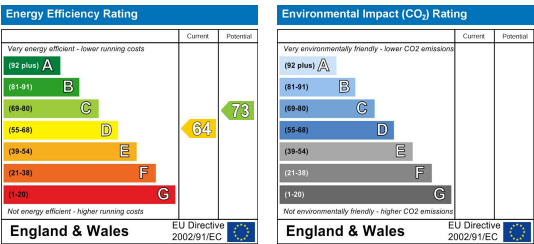
Area Map



Floor Plans



Energy Efficiency Graph



These particulars, whilst believed to be accurate are set out as a general outline only for guidance and do not constitute any part of an offer or contract. Intending purchasers should not rely on them as statements of representation of fact, but must satisfy themselves by inspection or otherwise as to their accuracy. No person in this firm's employment has the authority to make or give any representation or warranty in respect of the property.